

Pocket Bellows *Pumps*

Pocket bellows models are ideal for low flow, low pressure metering applications. The pump is constructed entirely of plastic and utilizes GRI's time-proven bellows technology to provide an accurate chemically-resistant metering pump with a long life, at an economical price.

Features:

- Average repeatability from stroke-to-stroke, $\pm 0.75\%$
- Dry run capability
- Self-priming
- No dynamic seals
- Superior corrosion resistance
- Economical

Pump Specifications:

Average Repeatability — From stroke-to-stroke, $\pm 0.75\%$
Flow Rates — To 240 ml/min
Fluid Temperatures — To 140°F (60°C)
Discharge Pressure — To 6 psi

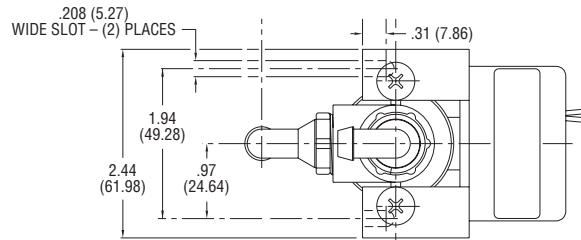
Motors:

The standard motor available for the Pocket Bellows Pump is an AC voltage synchronous motor. Motors are UL listed and continuous duty rated and are available in 115V, 50/60 Hz or 230V, 50/60 Hz.

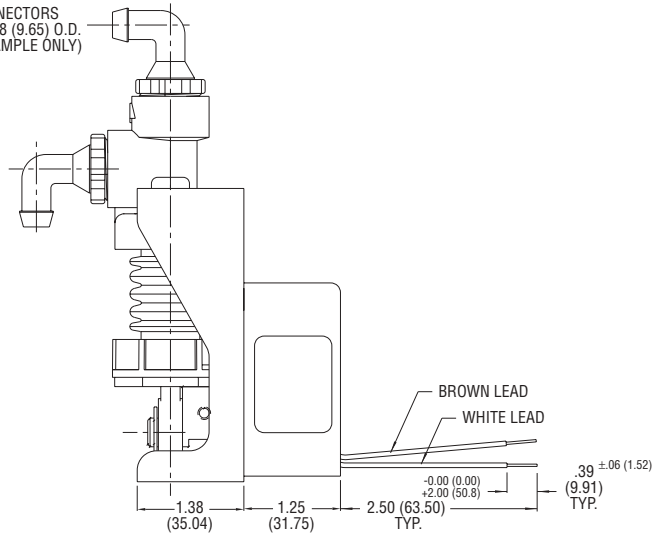


POCKET BELLOWS PUMPS - TYPICAL DIMENSIONS

Weight of single pocket
bellows pump: 0.55 lb.



ELBOW CONNECTORS
.25 (6.35) I.D. - .38 (9.65) O.D.
(SHOWN AS EXAMPLE ONLY)



Dimensions in Inches
(Dimensions in Millimeters)